

www.rehrigpallets.com



40 x 48 Rackable Plastic Pallet

Features:

- Four-way entry
- Consistent dimensions
- Large bottom deck surface
- Tapered entry and exit edges
- Secure re-connectable top deck
- No metal fasteners
- Won't absorb moisture or harbor bacteria

Material:

UV stabilized high impact co-polymer polypropylene resin

Options:

- FDA approved colors
- Light, heavy, or no top deck scuffing
- Corner lips – 40" x 48"
- UL® listed flame retardant resin

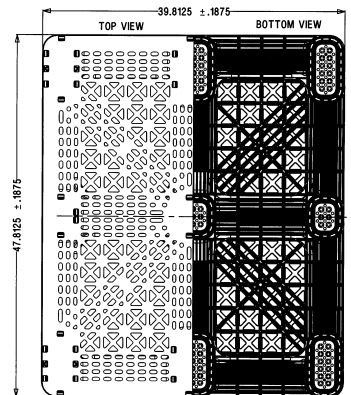
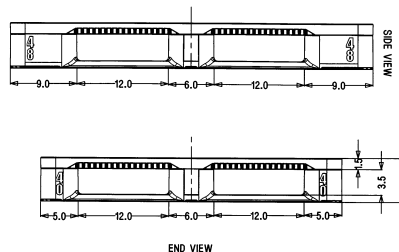
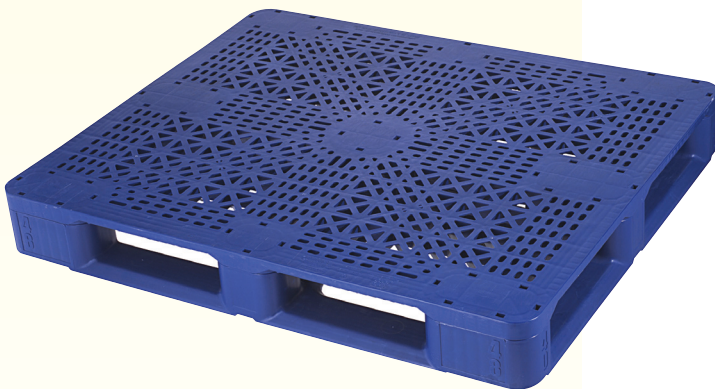
Other Sizes Available:

36 x 48, 37 x 37, 37 x 43, 95cm x 105cm, 110cm x 120cm and 110cm x 124cm

Rehrig Pacific has taken their 90 years of experience developing new and innovative products for industry and has designed a truly unique 2-piece, Snap-Lock™ plastic pallet.

Coming in a range of sizes, HuskyLite® Rackable plastic pallets offer cost-effective storage and handling options for all companies looking for increased operational efficiencies and better utilization of limited warehouse space.

The rugged lightweight design offers substantially longer life compared to wood pallets eliminating the need for repetitive costly repairs. High-pressure injection molding allows Rehrig designers to strategically vary wall thickness to achieve lighter yet stronger plastic pallets when compared to other molding processes.



Product	Entry	Reinforcement	Options	Width (W)		Length (L)		Height (H)		Weight		Maximum Static Load		Maximum Dynamic Load		Maximum Edge Rackable Load ¹	
				in	mm	in	mm	in	mm	lb	kg	lb	kg	lb	kg		
Snap-Lock	4-way	non-reinforced	0.25" (6.4mm) corner lips ²	40.0	1,016	48.0	1,219	6.0	152	44.2	20.0	30,000	13,600	4,000	1,800	2,000	900

1. Rating based on continuous 2" (51mm) wide support for entire length of the pallet short sides.

2. Lip height not included in specifications.

In keeping with our goal of continuing product improvement, Rehrig Pacific Company reserves the right to change materials, designs, and specifications without notice or obligation.

Headquarters: 4010 East 26th Street Los Angeles, California 90023 (323) 262-5145 (800) 421-6244 FAX: (323) 269-8506

Erie, PA (800) 458-0403 • Atlanta, GA (800) 241-9693 • Dallas, TX (800) 426-9189 • Kenosha, WI (800) 934-3312

Raymond, NH (800) 882-7440 • De Soto, KS (866) 265-4108 • Orlando, FL (800) 998-2525

www.rehrigpacific.com • info@rehrigpacific.com