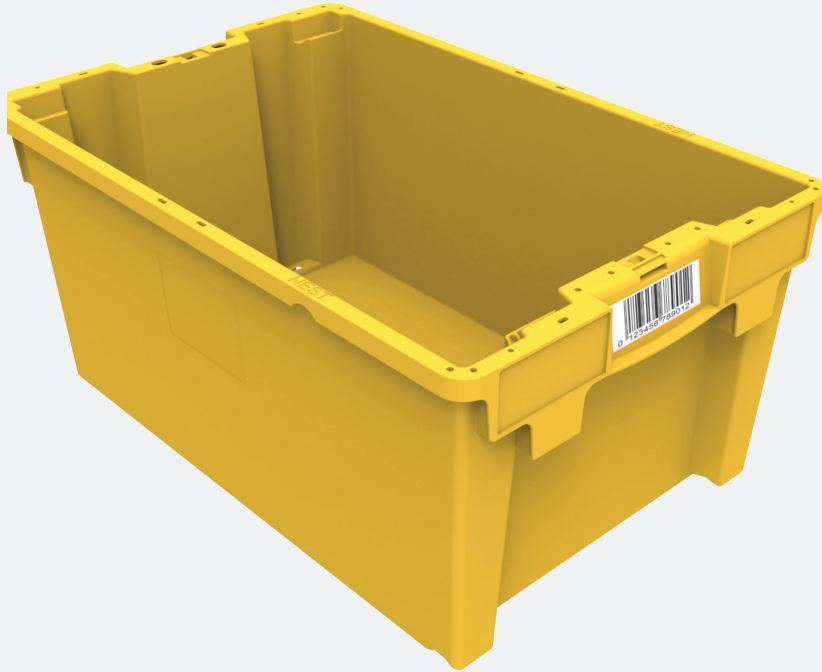




# 180° Stack-Nest Tote



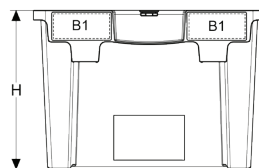
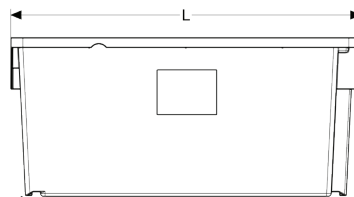
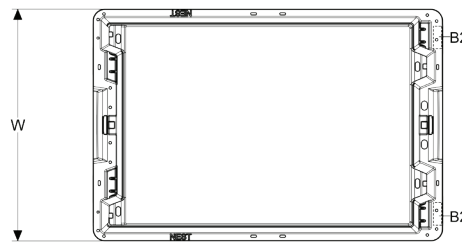
### Features & Benefits

- Made with durable, washable, 100% recyclable high density polyethylene (HDPE) resin
- Ergonomic palm-up handles with smooth broad surface for comfortable carrying
- Strategically placed drain holes in the base for spill containment
- Easily nests and stacks for maximizing transport and storage efficiencies
- Double wall rim for added stiffness and gripping
- Textured base for use with a wide variety of conveyor types and to prevent slipping when palletized
- Smooth continuous walls prevent product damage and ease cleaning.
- Large handle surface for barcode and RFID placement

### Options

- Colors: Choice of standard or optional colors
- Decoration: Hot-stamp, molded-in logos available

| Specifications       | IN/LB | CM/KG  |
|----------------------|-------|--------|
| Overall Length (L)   | 23.5  | 596.90 |
| Overall Width (W)    | 15.6  | 396.24 |
| Overall Height (H)   | 10.64 | 270.26 |
| Internal Base Length | 19.3  | 490.22 |
| Internal Base Width  | 13.4  | 340.36 |
| Internal Height      | 10.53 | 267.46 |
| Weight               | 4.2   | 1.91   |
| Nest Increment       | 3.45  | 87.63  |
| Stack Increment      | 9.71  | 246.63 |
| 53' Trailer Quantity | 4,640 |        |



| Decoration Areas | WIDTH (IN) | HEIGHT (IN) |
|------------------|------------|-------------|
| Brand (B1)       | 3.60       | 1.45        |
| Brand (B2)       | 0.40       | 1.38        |

**Corporate Headquarters**  
 4010 East 26th St., Los Angeles, CA 90058  
 (800) 421-6244 • (323) 262-5145

**Locations**  
 Los Angeles, CA • Orlando, FL • Atlanta, GA • De Soto, KS  
 Erie, PA • Dallas, TX • Kenosha, WI • Quebec, Canada  
 Querétaro, Qro., Mexico

**Web:** [www.rehrigpacific.com](http://www.rehrigpacific.com)



A FAMILY TRADITION OF GROWTH, SERVICE AND INNOVATION