



# Move more with a lighter and safer integrated solution

For decades Rehrig Pacific has been leading the way in the creation of reusable plastic packaging. Our solutions are specifically designed to handle the unique needs of bulk packaging applications, including the transportation of aluminum, steel, glass and plastic products.

As a partner to over twelve industries, we are dedicated to finding the right solutions for our customers. We know that to be a sustainable supply chain company an organization must limit waste, including breakage, and optimize shipping capacity. We meticulously design our solutions to ensure your products arrive safely and ship more efficiently, allowing for 80 additional pallets per truck compared to the competition. And with multiple manufacturing facilities located from coast to coast we offer the shortest freight lanes, reducing freight costs and unnecessary emissions.



## Features & Benefits



### Economic

Fit more product on a truck and decrease extra trips.



### Efficient

Reduce the time spent repairing or replacing pallets.



### Durable

Solidly built for impact resistance and easy handling.



### Innovative

RFID tagging for cold-chain traceability and IoT integration.



Scan or click to learn more

**Made to move.™**

## Containers That Fit Your Products

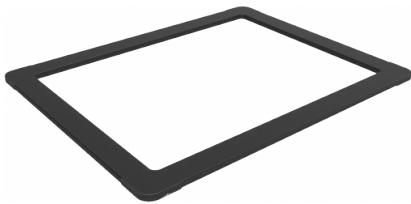
Our products are built with optimization in mind. From weight considerations to stacking to impact resistance, our reusable bulk transport solutions are lighter and easily integrated with other current packaging floats. With a flow-through cleanable design, one-piece injection molded base, and OSHA compliant features, our products are ideal for optimizing storage and improving the distribution of goods.



### 44 x 56 Bulk Pallet

Allows for 80 additional units loaded per truck, reducing the total annual freight shipments between closed-loop locations, ultimately eliminating freight costs and unnecessary emissions.

- 2 versions to serve steel and glass containers
- Impact resistance against forklift damage
- Snap-lock technology



### Top Frame

Steel reinforced with a sleek, one-piece welded design, our Top Frame pallet is intended to handle tensile banding requirements with ease across multiple packaging sectors, including steel cans, aluminum cans, glass jars and bottles, blow-molded PET products, closures, and preforms.

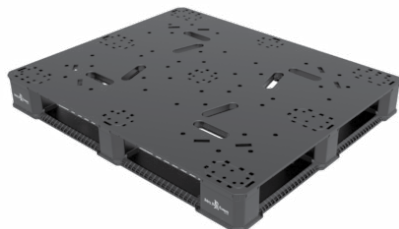
- Reduces corner damage
- Longer lifecycle with a lighter option
- Enhanced deflection results



### GP Bin

Compared to one of our biggest competitors, our GP Bin allows for 30 extra units loaded on a truck with less weight (107 lbs vs. competitor's 135 lbs option). Even with an additional load, less density enables better pack-out before weighing the truck and reduces overall freight costs.

- Flow-through cleanable design
- Solid, one-piece injection molded base
- Seamlessly stacks and integrates



### 48 x 40 & GMA Series Pallets

The GMA pallets have the Highest racking capability by cold-temp ready 48x40 pallet on market. It's true block style design meets the 5.7" height limit requirement with edge-racking capabilities up to 3,200lbs.

- Ergonomic design for easy handling
- Flow-through cleanable design
- RFID tagging ready for Cold-Chain Traceability & IoT integration

