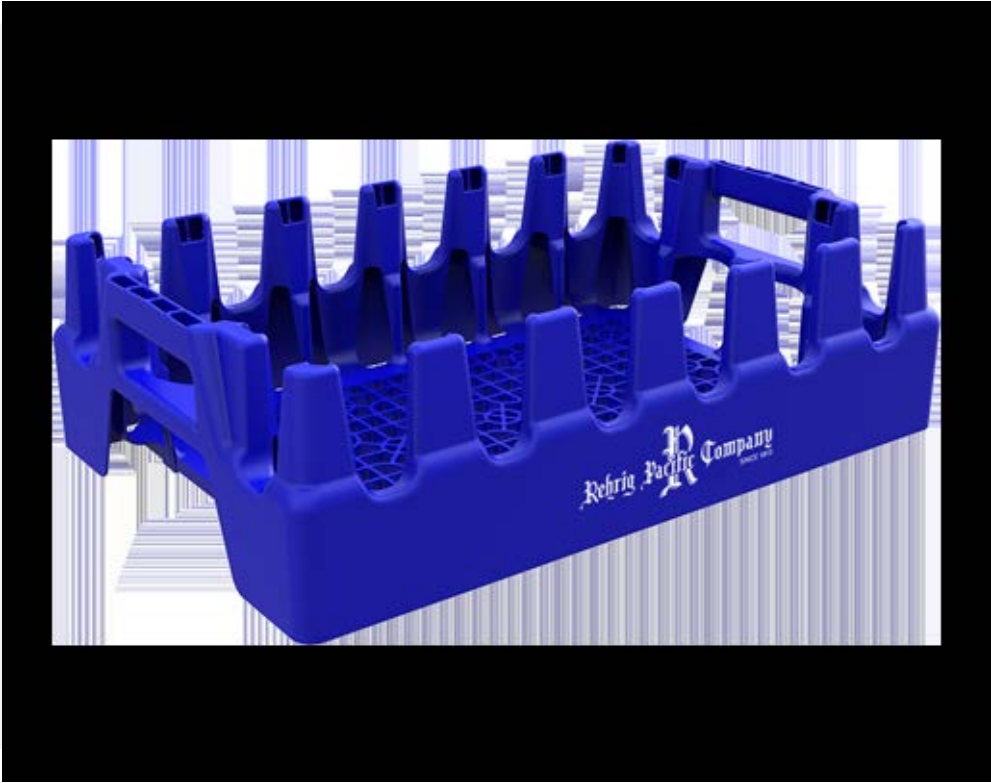
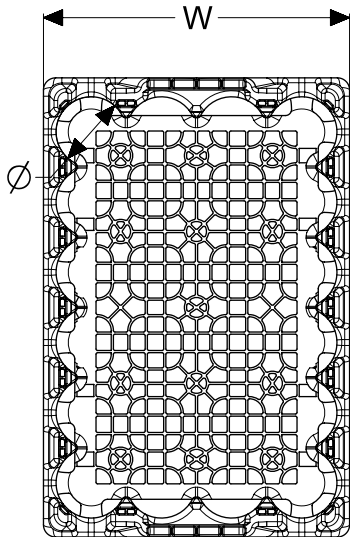


# 20oz Super High Wall Merchandiser

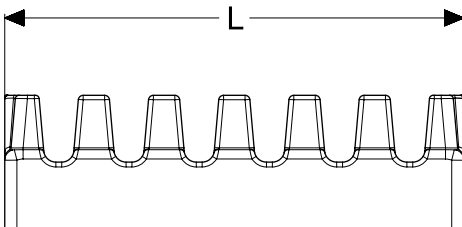
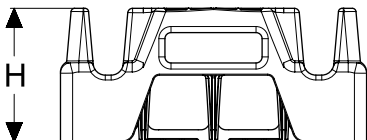


### Specifications

- Ergonomic, sturdy handles with the palm up/ palm down profile for ease with grasping, lifting and carrying
- Twist 'n slide bottom locates and locks crates and closures for stability in transit, yet releases easily for unloading
- Highly nestable to reduce space needed for empty storage
- Nested crates interlock for secure stacking in storage, return transit and unloading
- De-nest easily either manually or with automated de-nester
- Customized color and branding available to promote brand equity and asset management
- Large brand panel for increased brand awareness
- Optional bar code, RFID and proximity marketing enablement
- Large display windows highlight labels, branding and bottle profiles
- Tall columns increase bottle stability in transit
- Open design for quick, easy merchandising
- Engineered high density polyethylene (HDPE) material for enhanced strength and durability



Specifications	IN/LB	MM/KG
Length (L)	18.9	480.06
Width (W)	12.6	320.04
Height (H)	5.5	139.70
Pocket Diameter (Ø)	2.89	73.41
Nesting Increment	3.0	76.2
Weight	2.5	1.134



**Corporate Headquarters**  
 4010 East 26th St., Los Angeles, CA 90058  
 (800) 421-6244 • (323) 262-5145

**Locations**  
 Los Angeles, CA • Orlando, FL • Atlanta, GA • De Soto, KS  
 Erie, PA • Dallas, TX • Kenosha, WI • Quebec, Canada  
 Querétaro, Qro., Mexico

**Web:** [www.rehrigpacific.com](http://www.rehrigpacific.com)



A FAMILY TRADITION OF GROWTH, SERVICE AND INNOVATION